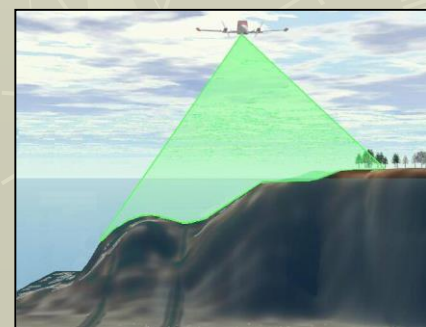


# Il sistema informativo del mare e della costa

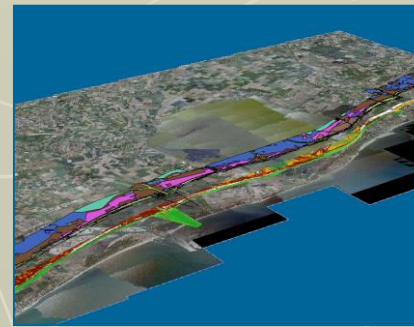
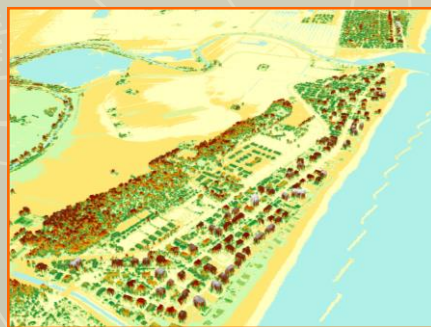


osservazione integrata dei fenomeni, attraverso la consultazione trasversale e simultanea dei dati collegamento alle altre banche dati del servizio: geologia, geotecnica, idrogeologica

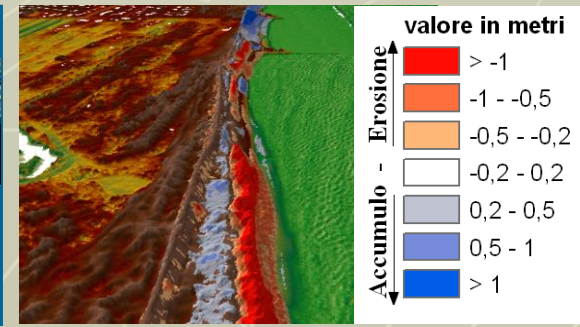
interfacce web per la consultazione/accesso ai dati da parte del pubblico



Dati di monitoraggio



cartografie



elaborazioni

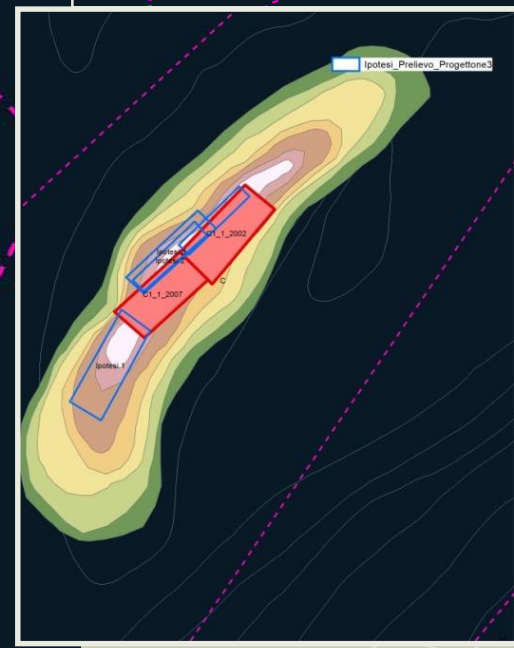
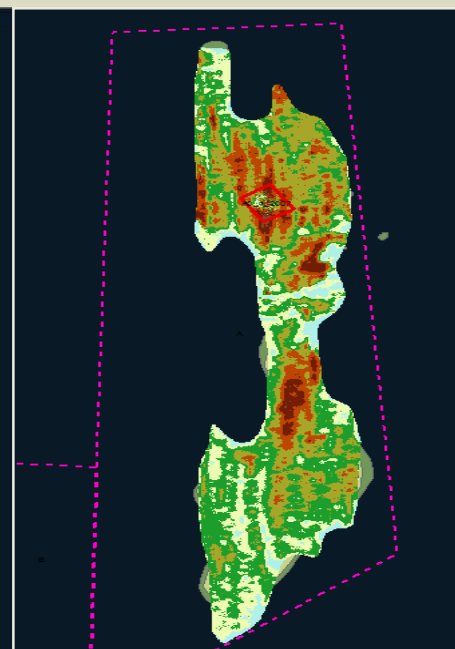
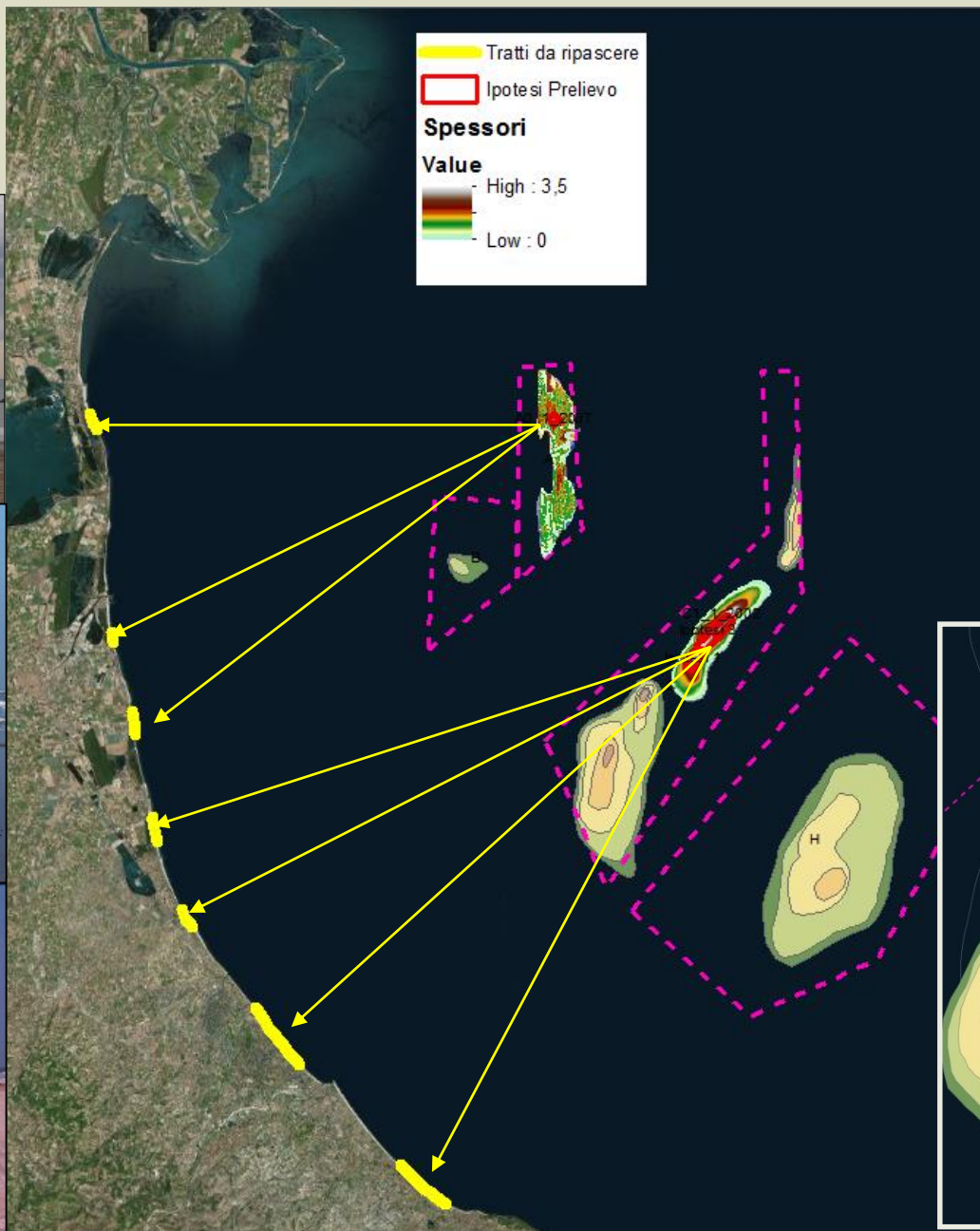
# Sistema informativo per la gestione dei depositi sottomarini

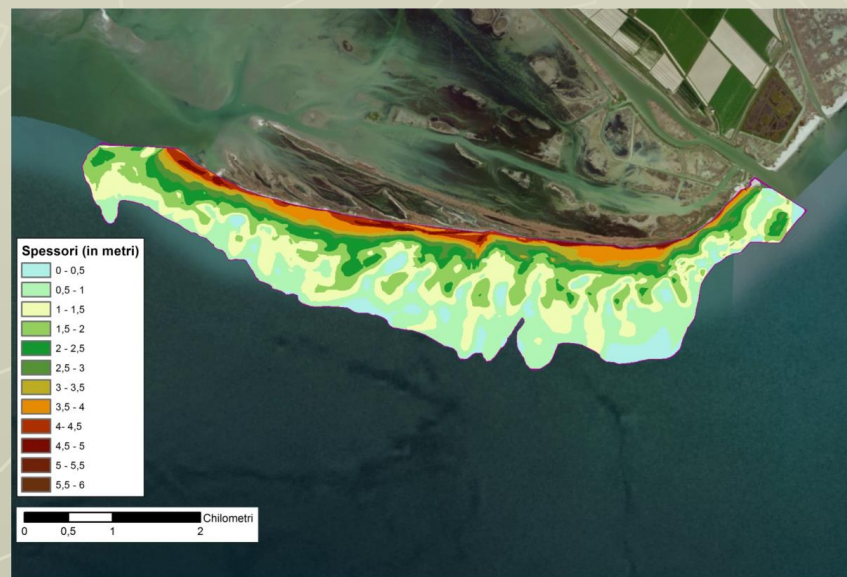
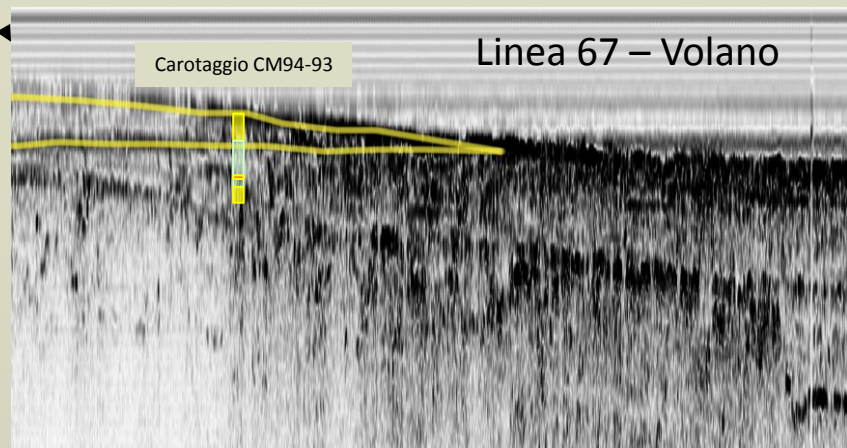
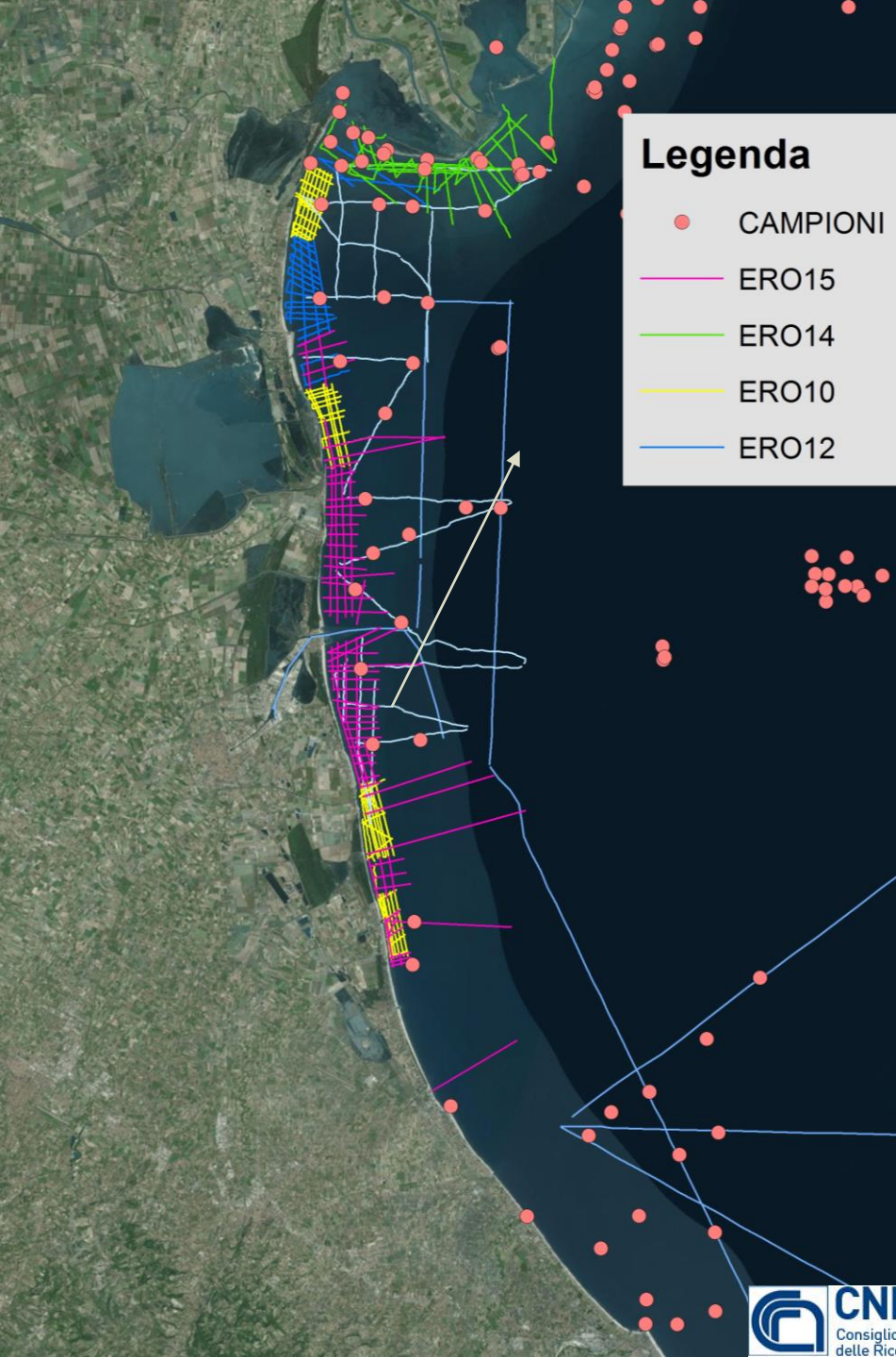


PRIMA



DOPO







*Morfologie da impatto*

*Ventagli di washover Foce Reno*



*Canale di deflusso Lido di Savio*

**Rischi costieri - sistema fisico**



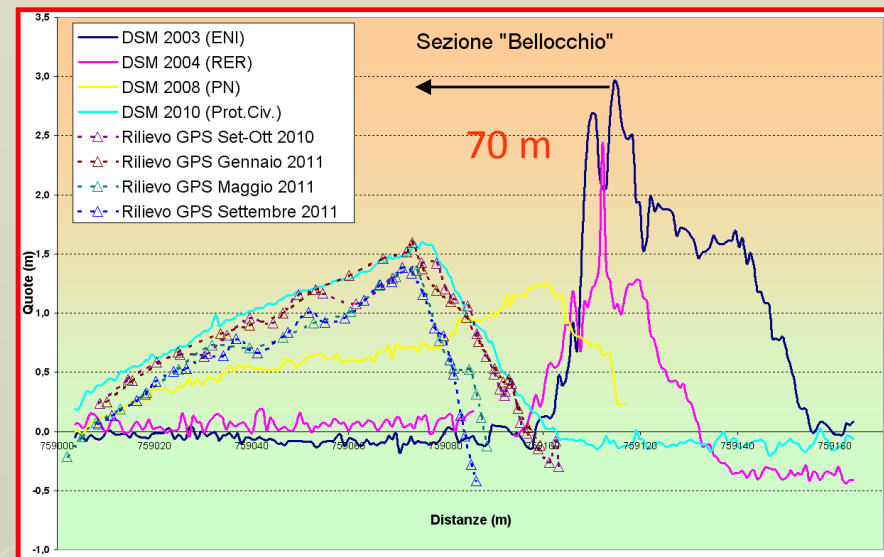
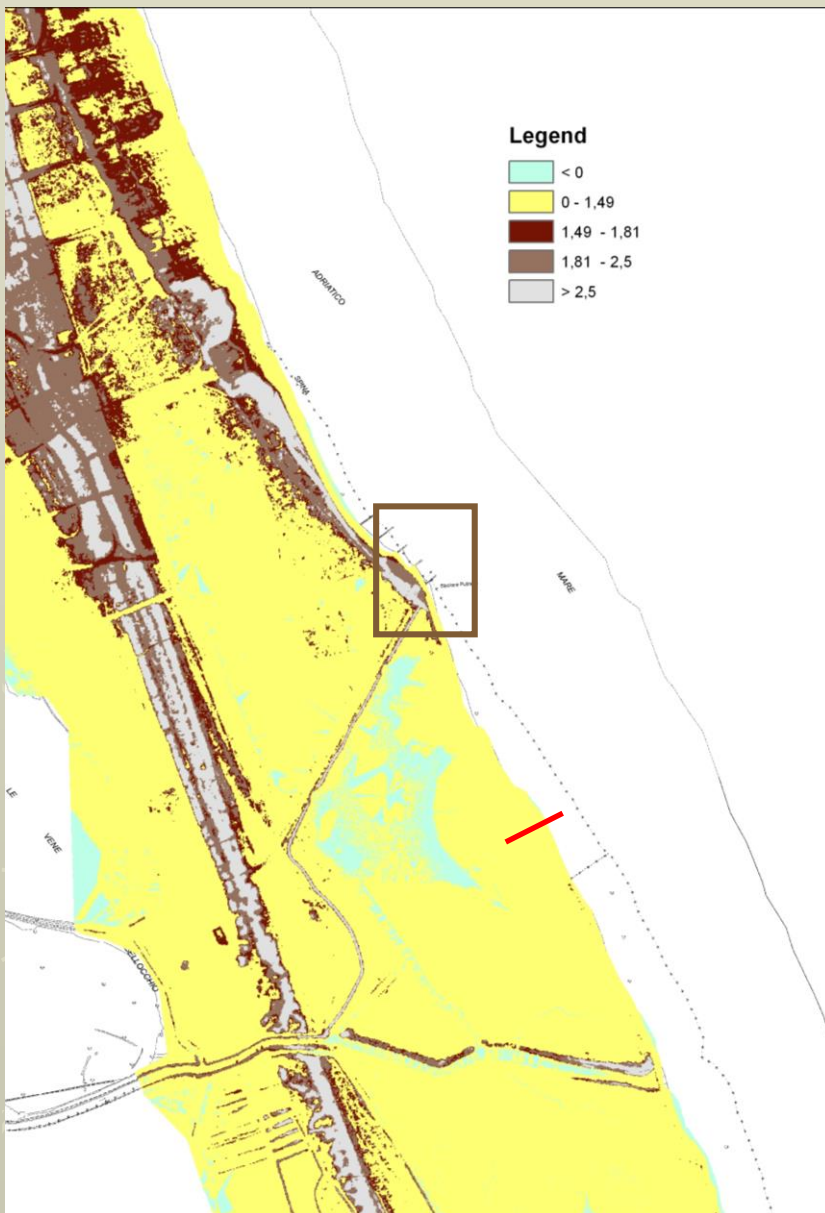
*Danni a infrastrutture e inondazioni*

*Milano Marittima*

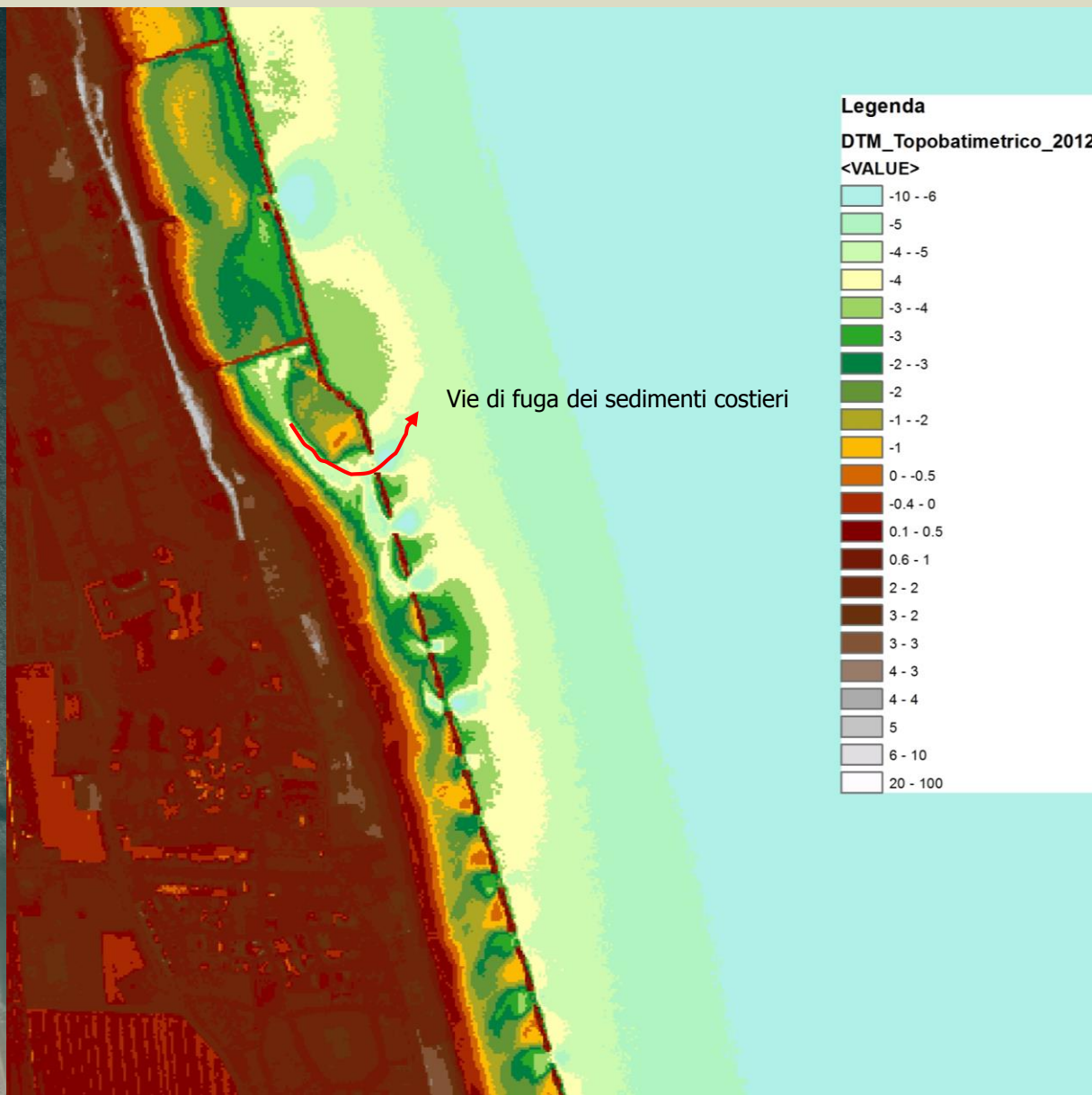


015 *Cesenatico*

# Foce Reno



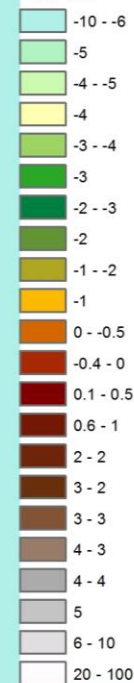
# Rischi costieri - sistema fisico



## Legenda

DTM\_Topobatimetrico\_2012

<VALUE>



# L'atlante Adriatico SHAPE - HAZADR



**SHAPE**  
between coast and sea

**Adriatic Atlas**  
to support ICZM and MSP



**Layers**

- ➕ Add Local data
- 7 Environment
- 8 Geoscientific Information
- 9 Health
- Foul areas**
  - Foul area (point)
  - ★ Foul areas
  - Foul areas
  - Foul Areas
- Wrecks
  - Wrecks (IT)
  - ★ dangerous wreck
  - distributed remain
  - non-dangerous wreck
- 10 Imagery - Base Maps - Earth C
- 11 Intelligence Military
- 12 Inland Waters
- 14 Oceans
- 15 Planning-Regulation zone
- 17 Structure
- 18 Transportation
  - Maritime transport system
    - Transport networks
      - Ferry route
      - no GPS track
      - GPS track from DSM
      - Motorway of the sea
      - motorway of the se.
  - Terrestrial transport network
    - Streets
    - Streets

**Map**

Search in SHAPE Catalog

Scale: 1 : 8.000.000

# L'atlante Adriatico SHAPE - HAZADR

